



November 2021

---

## **WATS Client 6.0 Installation Guide**

In this document:

- WATS Client Installation
- Configure the WATS Client
- WATS Client Upgrade
- Unattended client install
- Converter setup



## WATS Client installation

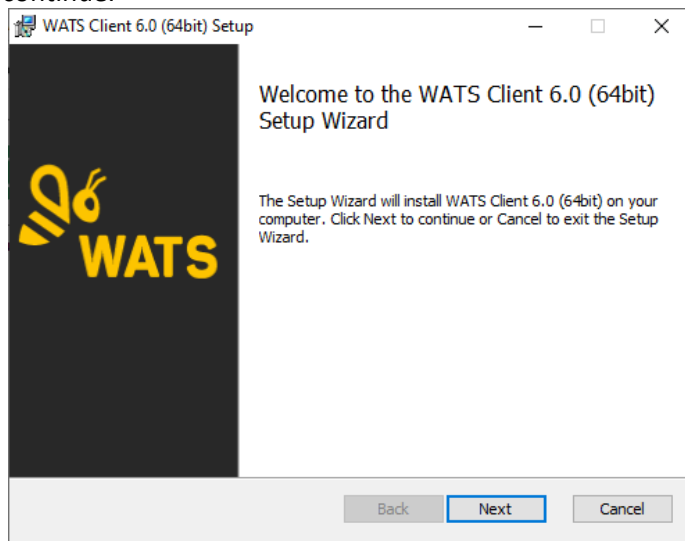
Navigate to <https://download.wats.com>

Select the correct installation file depending on what operating system you run (32 or 64 bit). Run (double click) the downloaded .msi file.

To upgrade the Client from a previous version, see the WATS Client Upgrade section below.

### Step 1

The start page displays the version of the WATS Client that will be installed. Click “Next >” to continue.

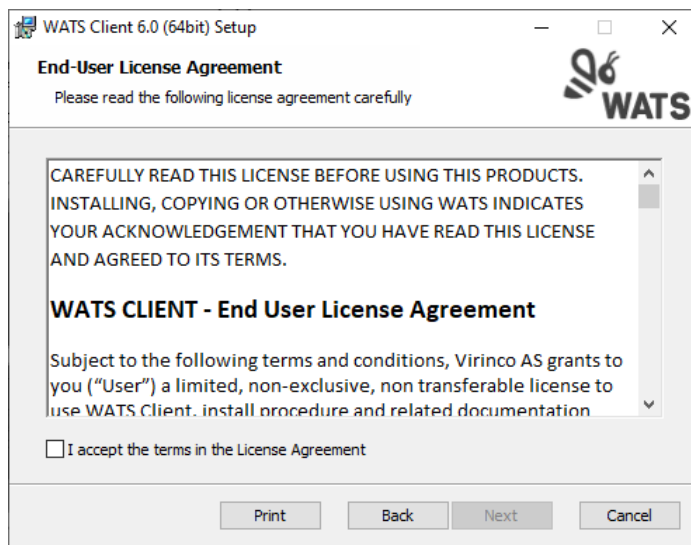


### Step 2

Read and accept the terms in the License Agreement.

**IMPORTANT:** Carefully read the license before using this Product. Installing, copying or otherwise using WATS indicates your acknowledgement that you have read the license and agreed to its terms.

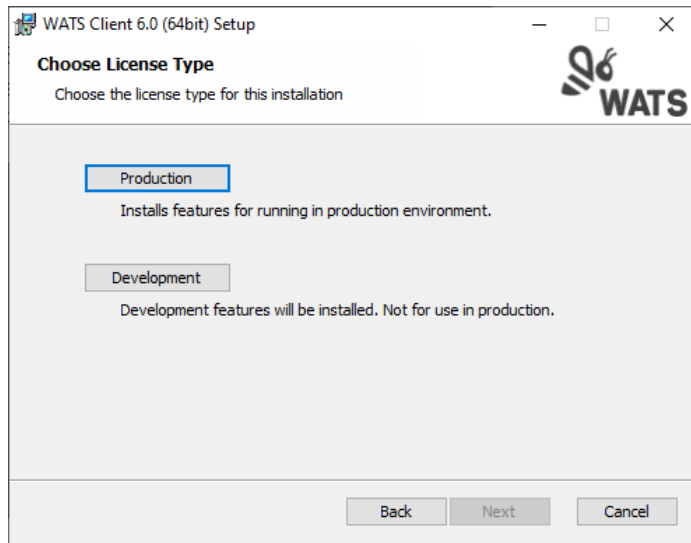
Click “Next >” to continue.





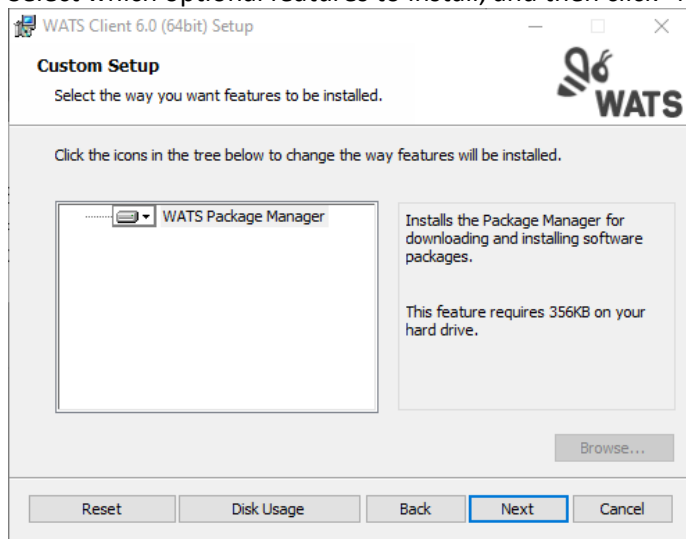
### Step 3

Select the appropriate license type by clicking either the Production or the Development button.



### Step 4

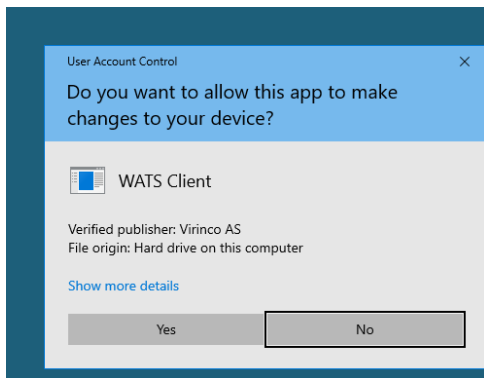
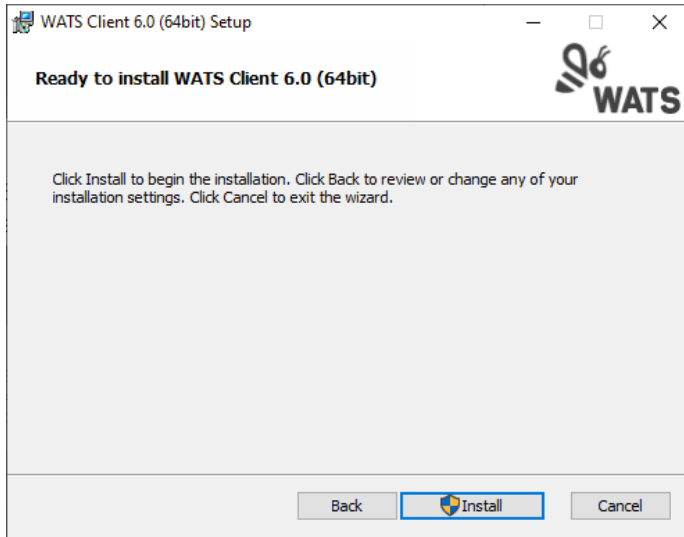
Select which optional features to install, and then click “Next >” to continue.



### Step 5

#### Ready to Install

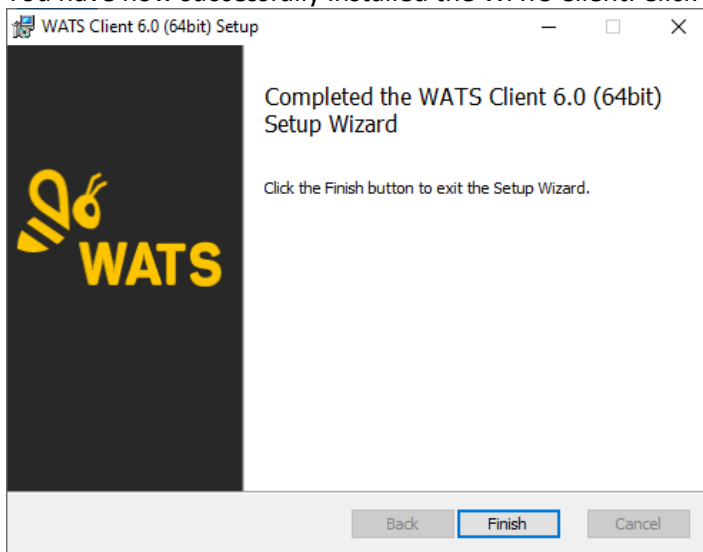
Click “Install” to continue.



Windows may display a UAC message box. Click Yes/Allow/Continue to continue the installation.

## Step 6

You have now successfully installed the WATS Client. Click "Finish".

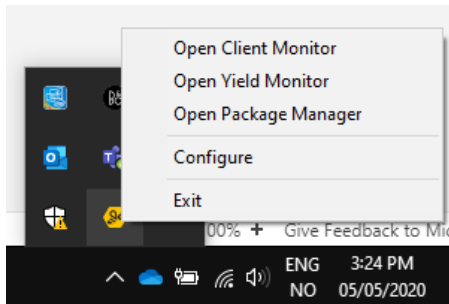


After successful installation, the WATS Configurator should start automatically.



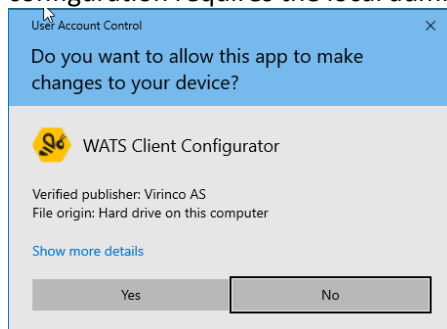
## Configure the WATS Client

If the WATS Client configure application does not start automatically, you can launch the application by right clicking on the WATS Icon in the notification area. Select “Configure”.

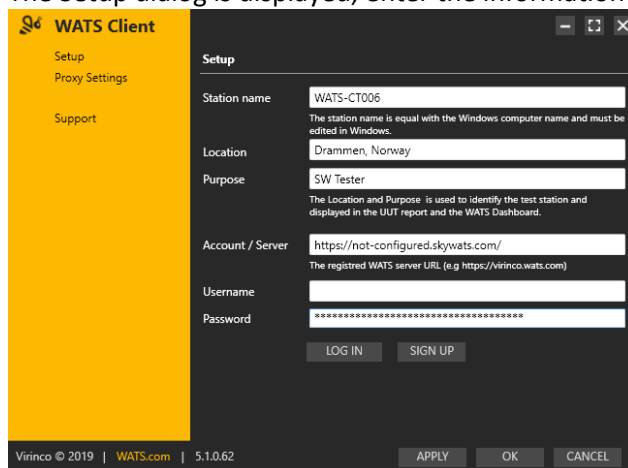


### Step 1 - Setup

- If your OS is set up with UAC (User Access Control), you must accept this. The configuration requires the local admin rights on your machine.



- The Setup dialog is displayed, enter the information requested.



- Station name is equal to Windows name (edit in Windows settings)
- Enter the Location and Purpose of the computer.
- Enter your WATS Server URL.
- Enter a valid username and password (same credentials as used to log in to the WATS web application). The user must have access to register new clients.
  - For remote installations of clients, you should not distribute your Username and Password. Instead, you can use a Token. Add the Token in the Password

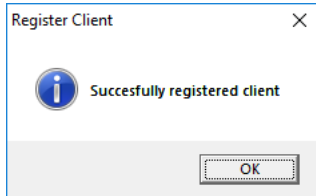


field and leave Username blank. See <https://virinco.zendesk.com/hc/en-us/articles/360014579951>

- Click the *Log In* button to continue with the client registration process.

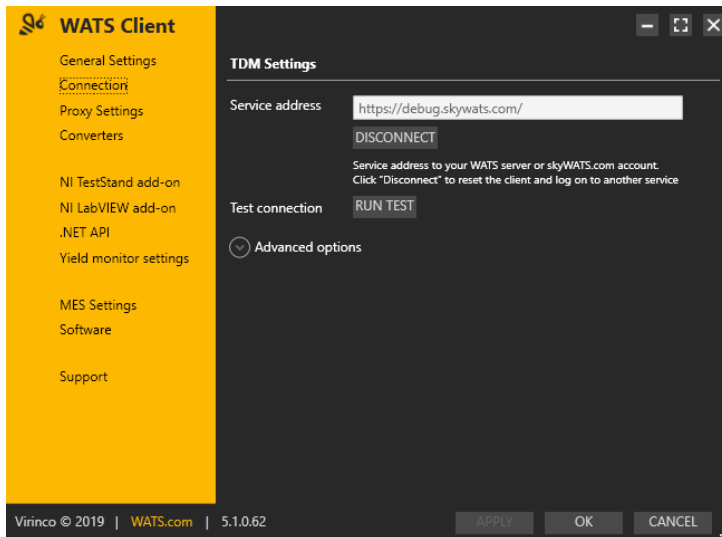
If you need to set up proxy settings to access the WATS server, you can click Proxy Settings on the left menu before clicking the Log In button.

On successful registration you will see this message box.

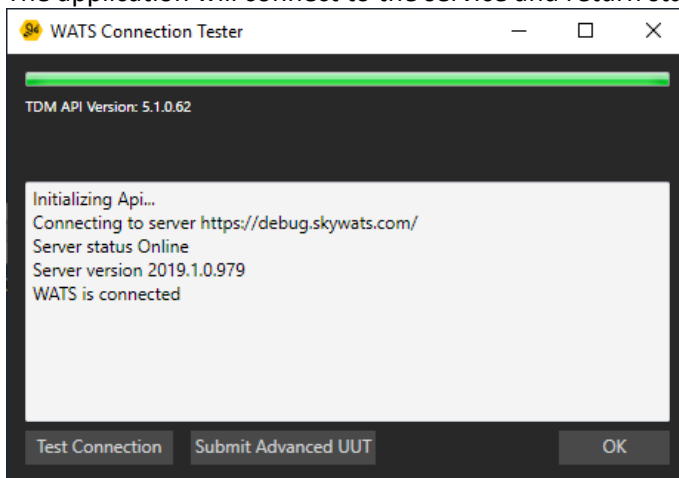


## Step 2 - Verify

To verify the connection to the server, you can click Connection on the left menu, and then click run test.

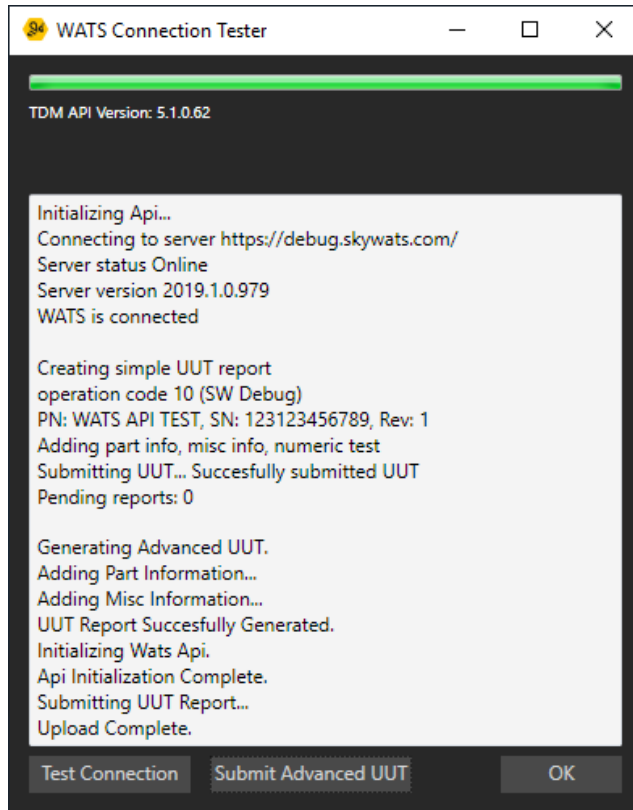


The application will connect to the service and return status





You can also click the Test Connection or Submit Advanced UUT to verify that the server will accept reports from this client.

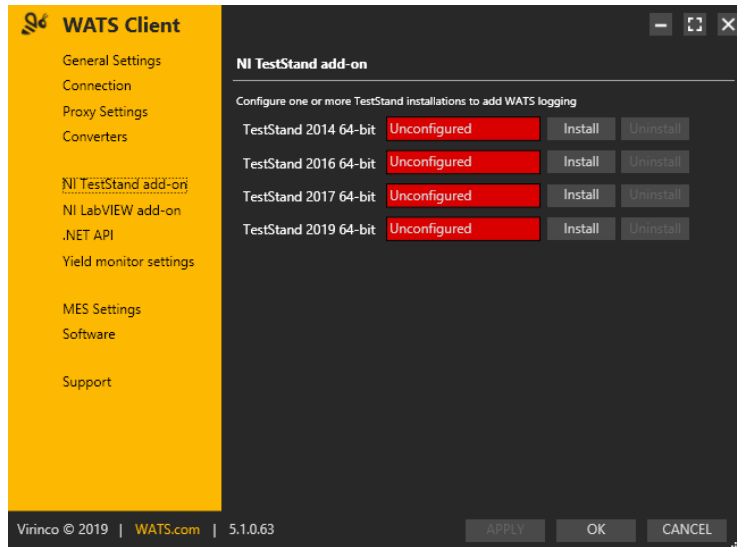




## Step 3 – add-on

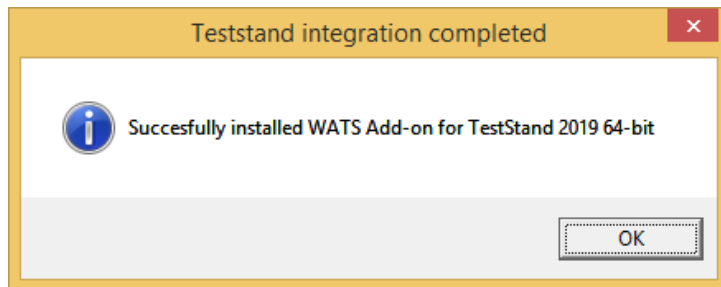
### NI TestStand

If you are to use the WATS Client for fully automated reporting, you must install the NI TestStand add-on (This requires that NI TestStand is pre-installed). Click on the NI TestStand add-on link in the TDM Settings sub menu.



Select the version of TestStand you want to configure and click “Install”. A confirmation message will be displayed on successful integration.

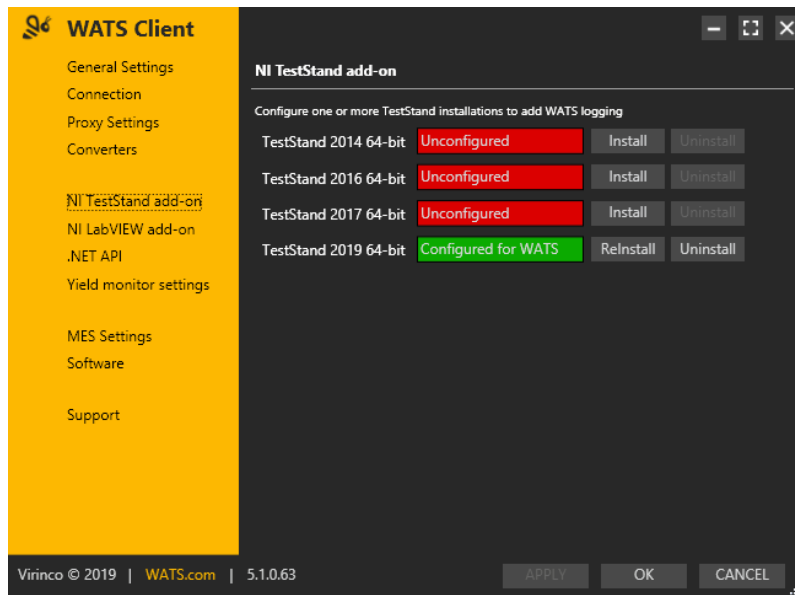
NOTE: Make sure any TestStand and LabVIEW application is closed.







The list will change to indicate the status on each installed version



You should now be able to launch TestStand and successfully log to WATS.

**NOTE:** If TestStand report a Type conflict (TS popup), select to load the “already loaded type” as resolving option.

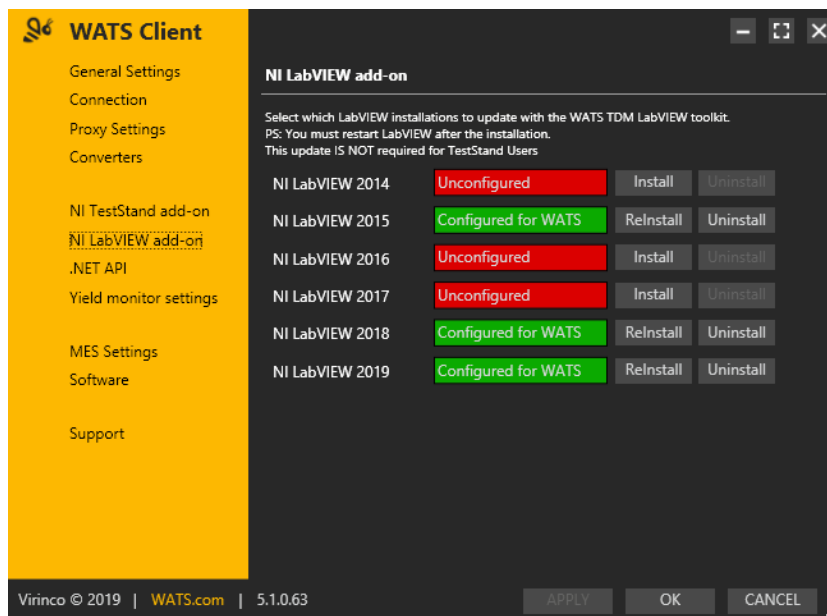
### NI LabVIEW

To utilize the WATS TDM LabVIEW toolkit, click on the NI LabVIEW add-on link in the WATS TDM sub menu. Select the version of LabVIEW you want to configure and click “Install”.

Restart LabVIEW after the installation.

Refer to the “WATS TDM LabVIEW toolkit – User Manual” for additional help.

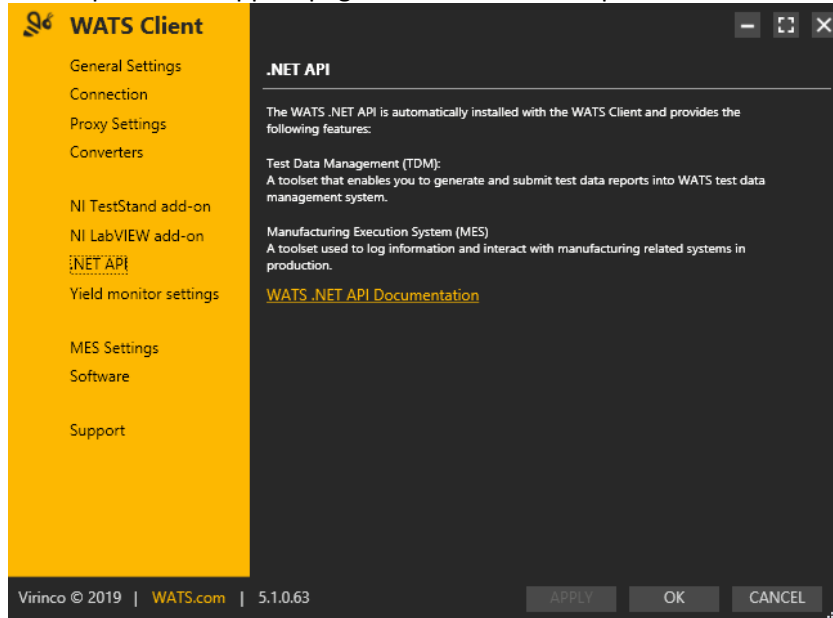
NET REQUIRED when using TestStand.





## WATS .NET API

The WATS .NET API is automatically installed with the WATS Client and can be used for creating UUT (Unit Under Test) or UUR (Unit Under Repair) reports from a stand-alone Visual Studio application, or other programming languages supporting .NET assemblies. Please see the help file and support pages for detailed descriptions.



## WATS MES

The WATS Client allow you to use the WATS MES modules (Workflow, Software, Product & Production). The modules must be installed on the Master Server.

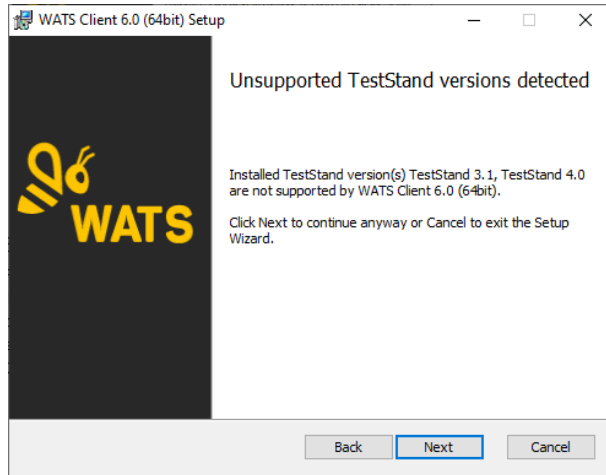
You can use the WATS MES functionality in the WATS API, or execute the *WATS MES – Test UUTs* execution entry point in TestStand, allowing you to force a workflow on the Units, download software (sequence files, VIs, other files and folders) or retrieve Product Information from the WATS Server. For more information, please contact Virinco.

## WATS Client Upgrade

You can upgrade WATS Client version 5.0 and 5.1 to 6.0. Download the WATS Client from <https://download.wats.com> and store it locally. Remember to select the correct installation file depending on what operating system you run (32 or 64 bit). Run (double click) the downloaded .msi file.

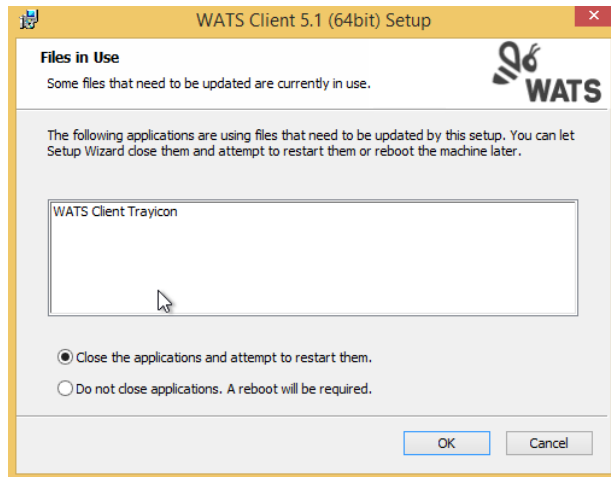
### Upgrade a single computer

The installation procedure is the same as with a first-time install, but if you have a TestStand add-on installed for a TestStand version that is no longer supported you may encounter this message:



You can still upgrade the WATS Client, but the add-ons for the unsupported versions of TestStand will no longer work. Click “Next >” to continue anyway.

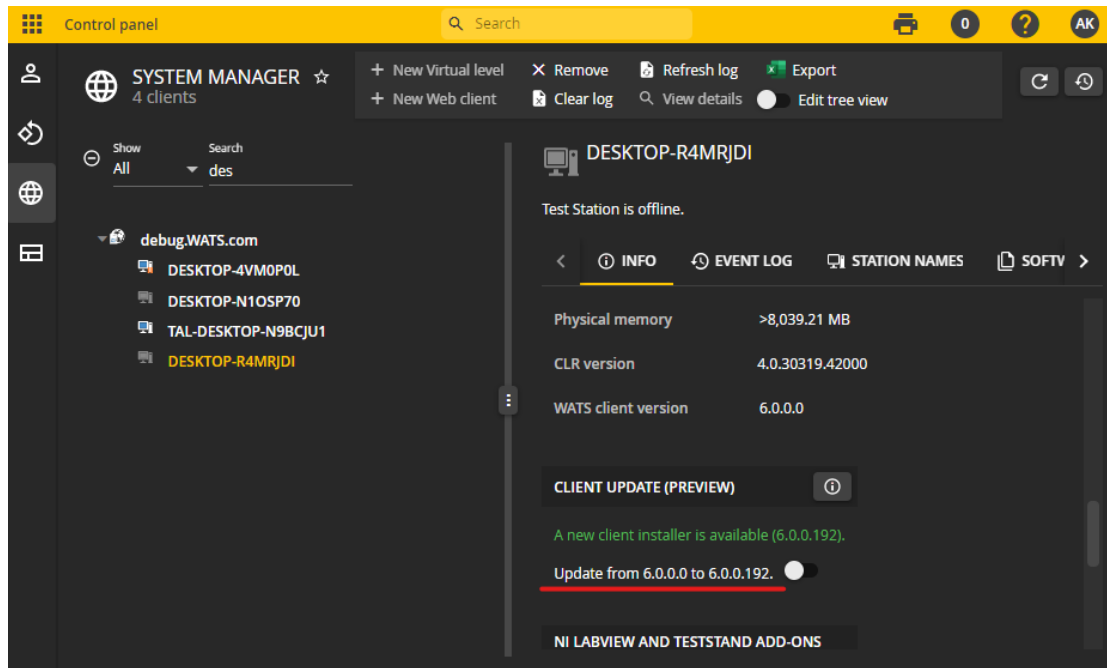
You may also encounter the files-in-use dialog:



Click Ok, and the setup will close the applications and continue with the upgrade.

### Upgrade from WATS server

From WATS 2020.2, upgrade of WATS Client 6.0 can be scheduled in the System Manager. The client will download and upgrade itself the next time the machine is restarted. Newer clients will be made available as part of maintenance releases.



## Unattended WATS Client install

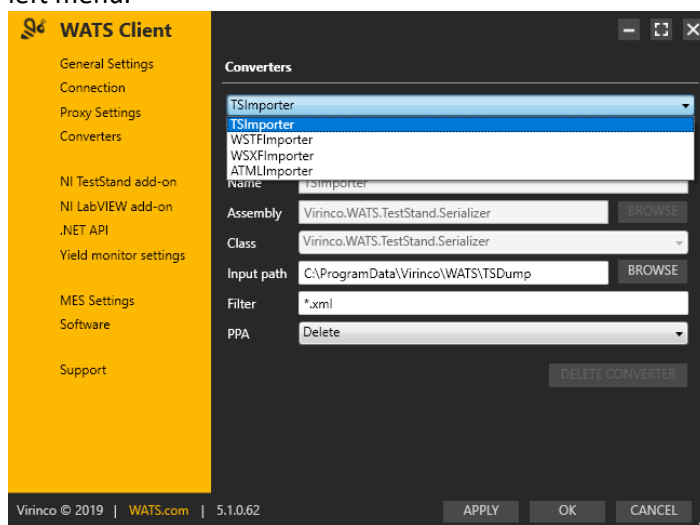
See this article:

<https://virinco.zendesk.com/hc/en-us/articles/360027290731-How-to-do-an-unattended-Install-Setup-of-WATS-Client-5-x->

## Converter setup

### Built in converters

The client installs 4 converters by default. These can be viewed by clicking Converters on the left menu.



- TSIImporter – converts reports from the TestStand Add-on.



- WSTFImporter – WATS Standard Text Format, see <https://virinco.zendesk.com/hc/en-us/articles/207424623-Wats-Standard-Text-Format-WSTF->
- WSXFImporter – WATS Standard XML Format, see <https://virinco.zendesk.com/hc/en-us/articles/207424643-Wats-Standard-Xml-Format-WSXF->
- ATMLImporter – Teststand ATML format version 2.02, 5.0 and 6.01

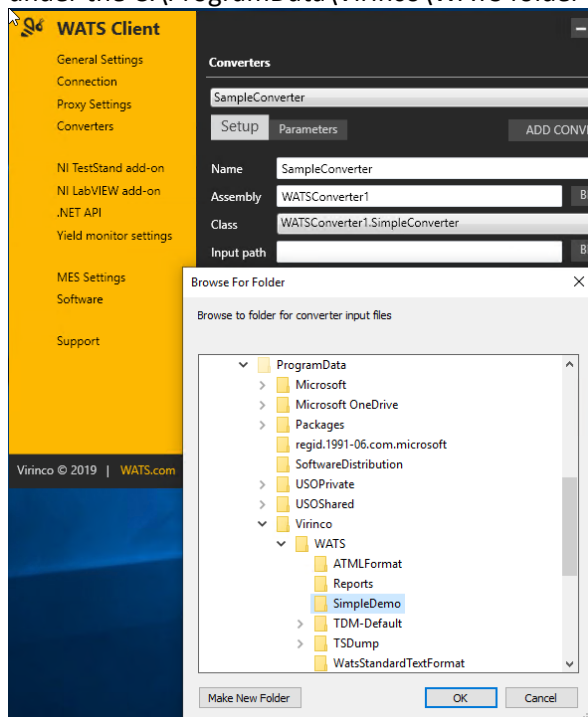
To convert files, place your files in the corresponding Input path for the converter. Also check the Parameter Tab (see under)

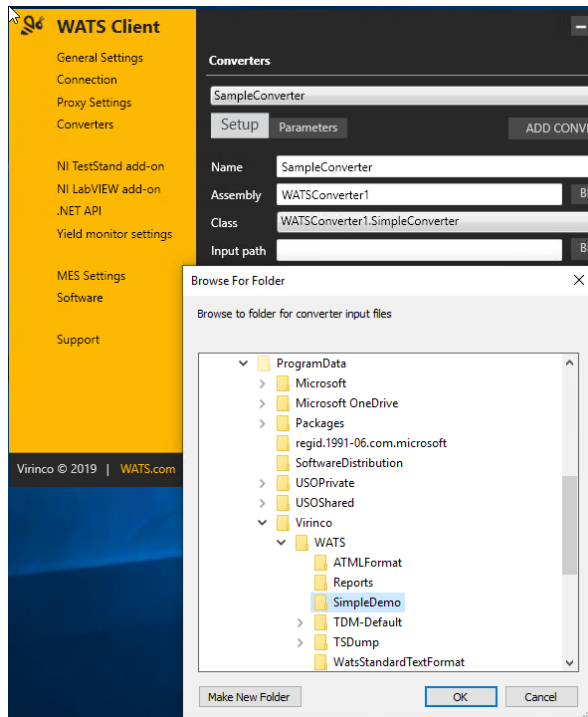
### Custom converters

Read more about creating custom converter on <https://virinco.zendesk.com/hc/en-us/sections/201690933-Converting-data>

To install a custom converter:

- Copy the assembly (a .net .dll) for example on the desktop.
- Select the Add Converter button, and fill in a Name.
- Click the Browse button to the right of the Assembly and select the .dll.
- The .dll can contain multiple converters. Select one from the Class combo box.
- Press the Browse button to the right of the Input Path and Create an input folder under the C:\ProgramData\Virinco\WATS folder





- This is where the client will look for files – also using the file mask given in Filter. It is recommended to use this folder as the “NETWORK SERVICE” local user needs modify rights to the file system. If you need to have it another place, see this article: <https://virinco.zendesk.com/hc/en-us/articles/207424113-WATS-Client-Add-write-permission-to-NETWORK-SERVICE-on-file-system-to-allow-converter-access>
- In the PPA (Post Process Action) select between Delete, Move or Zip. Move will move the processed file to a Done folder, Zip will place it in a monthly archive.
- Next check and edit any Parameters to the converter by pressing the Parameters button. Parameters contains typically data that is not contained in the data files. Note that you can create multiple instances of the same converter with different drop folders and parameters.

Virinco AS, Gråterudveien 20, 3036 Drammen, Norway.

virinco@virinco.com | www.virinco.com

Copyright © 2020 Virinco AS | All rights reserved